

# CAREER PATHS IN Human Services

## 4-YEAR OR MORE COLLEGE DEGREE AND/OR EQUIVALENT EXPERIENCE

Social & Community  
Service Managers  
\$35.37

Child, Family, and  
School Social Workers  
\$26.60

Clinical, Counseling, &  
School Psychologists  
\$41.40

Mental Health &  
Substance Abuse  
Social Workers  
\$25.38

Rehabilitation  
Counselors  
\$18.65

## 1-2 YEAR DEGREE AND/OR EQUIVALENT EXPERIENCE

Massage Therapist  
\$24.16

Manicurists and Pedicurists  
\$14.71

Hairdressers, Hair Stylists,  
& Cosmetologists  
\$13.38

## HIGH SCHOOL DIPLOMA OR EQUIVALENT

Social & Human  
Service Assistants  
\$17.05

Child Care Workers  
\$11.98

Community Health Workers  
\$18.39

Fitness Trainers & Aerobics  
Instructors  
\$20.21

Personal & Home Care  
Aides  
\$12.78

**CareerForce**  
*It's your state of success*

A proud partner of the  
**americanjobcenter**<sup>®</sup>  
network

These jobs are in demand in Minnesota and these are Minnesota Median wages. Data collected from Department of Employment and Economic Development.

Provided for you by the Minnesota  
Rural Career Counseling  
Coordinators (RC3 Grant)



View videos of workers in these occupations:  
<https://www.careeronestop.org/videos/careervideos/career-videos.aspx>

Affirmative Action/ Equal Opportunity Employer/Americans with Disability Act  
Upon request this form is available in alternative formats.  
Contact: Angie.Dahle@CSJobs.org or lwojtowicz@cmjts.org

# CAREER PATHS IN Human Services

## 4-YEAR OR MORE COLLEGE DEGREE AND/OR EQUIVALENT EXPERIENCE

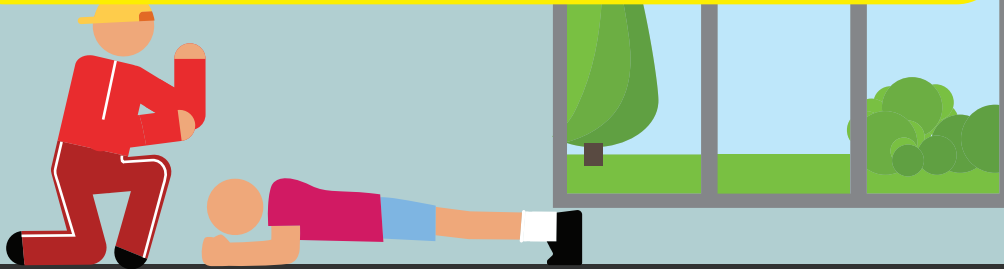
**Social & Community Service Managers \$35.37** Plan, direct, or coordinate the activities of a social service program or community outreach organization.

**Clinical, Counseling, & School Psychologists \$41.40** Diagnose and treat mental disorders; learning disabilities; and cognitive, behavioral, and emotional problems, using individual, child, family, and group therapies.

**Rehabilitation Counselors \$18.65** Counsel individuals to maximize the independence and employability of persons coping with personal, social, and vocational difficulties that result from birth defects, illness, disease, accidents, or the stress of daily life.

**Child, Family, and School Social Workers \$26.60** Provide social services and assistance to improve the social and psychological functioning of children and their families and to maximize the family well-being and the academic functioning of children.

**Mental Health & Substance Abuse Social Workers \$25.38** Assess and treat individuals with mental, emotional, or substance abuse problems, including abuse of alcohol, tobacco, and/or other drugs.

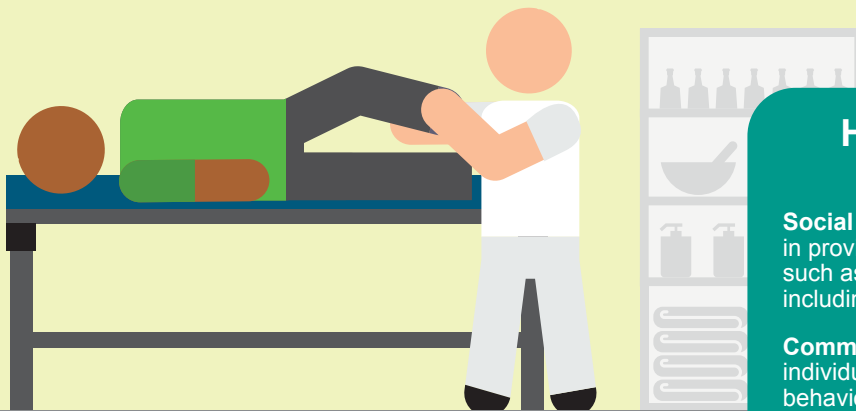


## 1-2 YEAR COLLEGE DEGREE

**Manicurists and Pedicurists \$14.71** Clean and shape customers' fingernails and toenails. May polish or decorate nails.

**Massage Therapist \$24.16** Perform therapeutic massages of soft tissues and joints.

**Hairdressers, Hair Stylists, & Cosmetologists \$13.38** Provide beauty services, such as shampooing, cutting, coloring, and styling hair, and massaging and treating scalp. May apply makeup, dress wigs, perform hair removal, and provide nail and skin care services.



## HIGH SCHOOL DIPLOMA OR EQUIVALENT

**Social & Human Service Assistants \$17.05** Assist in providing client services in a wide variety of fields, such as psychology, rehabilitation, or social work, including support for families.

**Community Health Workers \$18.39** Assist individuals and communities to adopt healthy behaviors. Conduct outreach for medical personnel or health organizations to implement programs in the community that promote, maintain, and improve individual and community health.

**Personal & Home Care Aides \$12.78** Assist the elderly, convalescents, or persons with disabilities with daily living activities at the person's home or in a care facility. Duties performed at a place of residence may include keeping house (making beds, doing laundry, washing dishes) and preparing meals.

**Child Care Workers \$11.98** Attend to children at schools, businesses, private households, and childcare institutions. Perform a variety of tasks, such as dressing, feeding, bathing, and overseeing play.

**Fitness Trainers & Aerobics Instructors \$20.21** Instruct or coach groups or individuals in exercise activities.

