



## Wright County Economic Trends WCEDP

Luke Greiner | *Regional Labor Market Analyst*

*Labor Market Information Office (<http://mn.gov/deed/data>)*

# Minnesota's August Employment Situation

Month/Year	Total	Black	Hispanic	White
August-21	4.4%	3.6%	5.5%	4.4%
July-21	4.6%	3.5%	6.7%	4.7%
August-20	5.3%	9.5%	7.9%	4.9%

- Unemployment ticked down to **3.8%** in August
- Minnesota gained **4,300** jobs in August (+.2%)
  - U.S. employment grew by **+0.2%** in August
  - Labor Force Participation Rate held steady at 67.8 (down from 70.2% in Feb 2020)
  - Labor Force has 86,215 fewer people than Feb 2020
- **Six** supersectors gained jobs in August and **five** lost jobs on a seasonally adjusted basis.
  - Gains were in Manufacturing up 2,300 jobs, Leisure & Hospitality, up 2,000 jobs, Trade, Transportation & Utilities, up 1,500 jobs, Financial Activities up 1,300 jobs, Professional & Business Services up 900 jobs and Construction up 600 jobs. • Losses were in Government, down 1,900 jobs, Education & Health Services, down 1,200 jobs, Information down 600 jobs, Other Services down 500 jobs and Mining & Logging down 100 jobs
  - Losses in Education & Health Services were in Health Care & Social Assistance, down 1,800. Private Educational Services gained 600 jobs in August. • Losses in Government were across the board, with Federal Gov down 400, State Gov down 900 and Local Gov down 600.

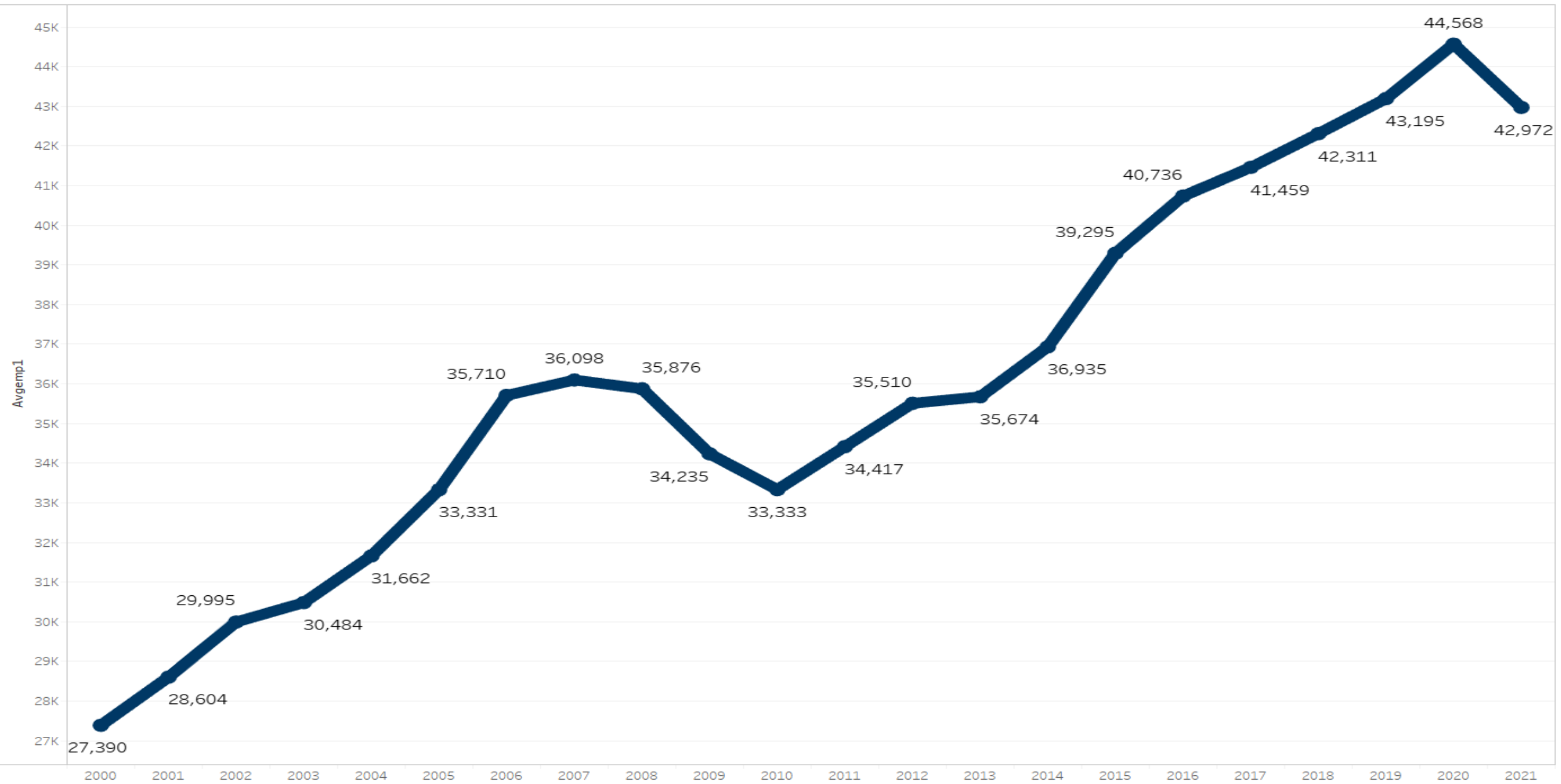
## Over- The- Year

- Minnesota has regained **65.5%** of the jobs lost from Feb through April 2020. We still need to claw back more than **128k** jobs to reach pre-pandemic employment levels

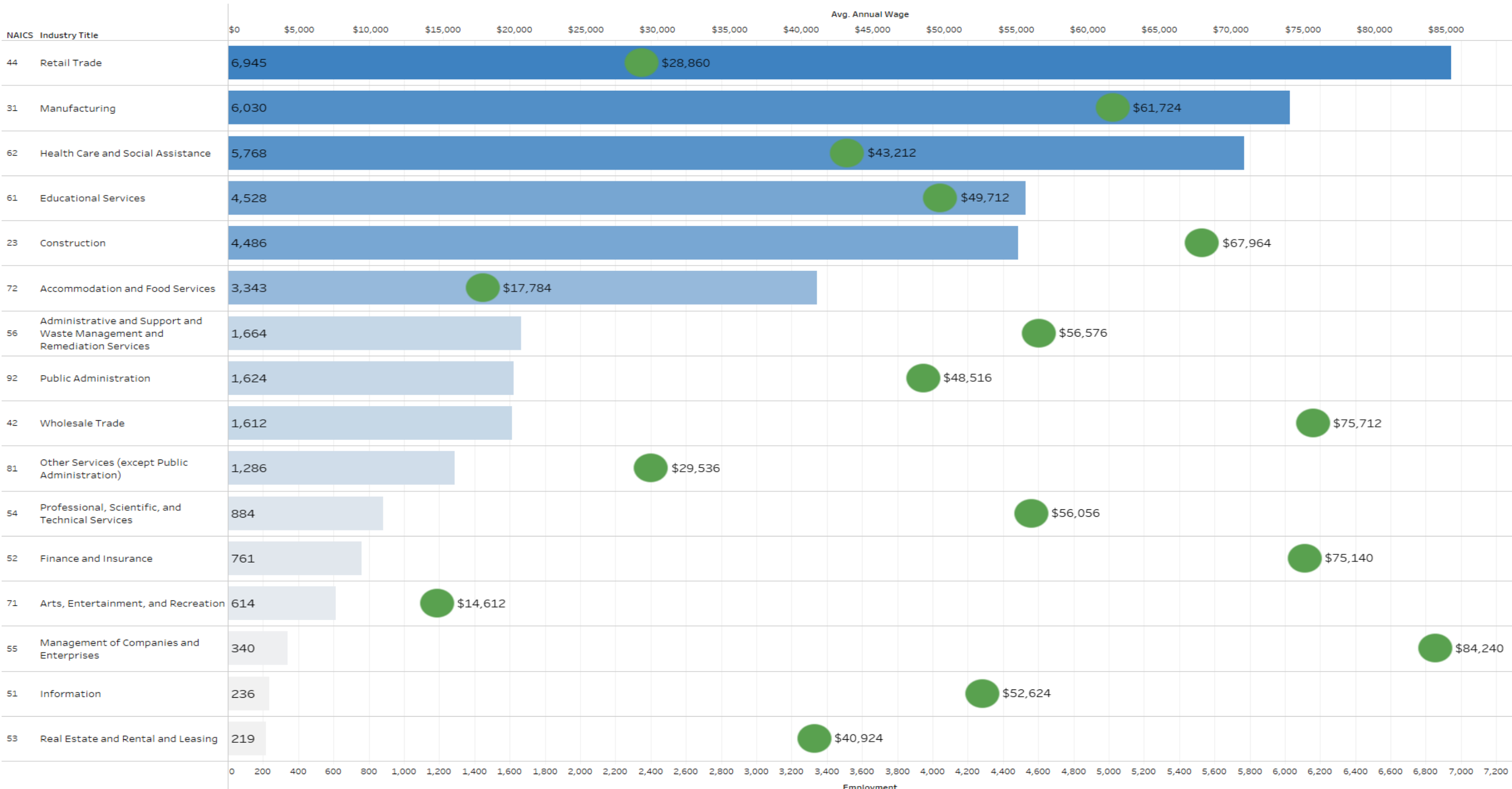
August 2021 Over The Year (OTY) Employment Growth By Industry Sector Not Seasonally Adjusted			
	OTY Job Change	OTY Growth Rate (%)	US OTY Growth Rate
Total	+109,834	+4.0%	+4.4%
Private	+103,012	+4.3%	+5.2%
Mining & Logging	+286	+4.4%	+8.7%
Construction	+7,022	+5.2%	+2.5%
Manufacturing	+11,196	+3.6%	+3.0%
Trade, Transport. & Utilities	+10,780	+2.1%	+3.3%
Information	-2,501	-5.9%	+5.7%
Financial Activities	-748	-0.4%	+1.9%
Prof. & Business Services	+18,307	+5.1%	+5.6%
Ed. & Health Services	+9,800	+1.9%	+2.5%
Leisure & Hospitality	+43,879	+19.9%	+17.5%
Other Services	+4,991	+4.9%	+6.7%
Government	+6,822	+1.8%	-0.2%

Metropolitan Statistical Area	OTY Employment Change (#, NSA)	OTY Employment Change (% , NSA)
Minneapolis-St. Paul MN-WI MSA	+72,300	3.9%
Duluth-Superior MN-WI MSA	+6,198	5.0%
Rochester MSA	+4,621	3.9%
St. Cloud MSA	+2,155	2.1%
Mankato MSA	+2,538	4.8%

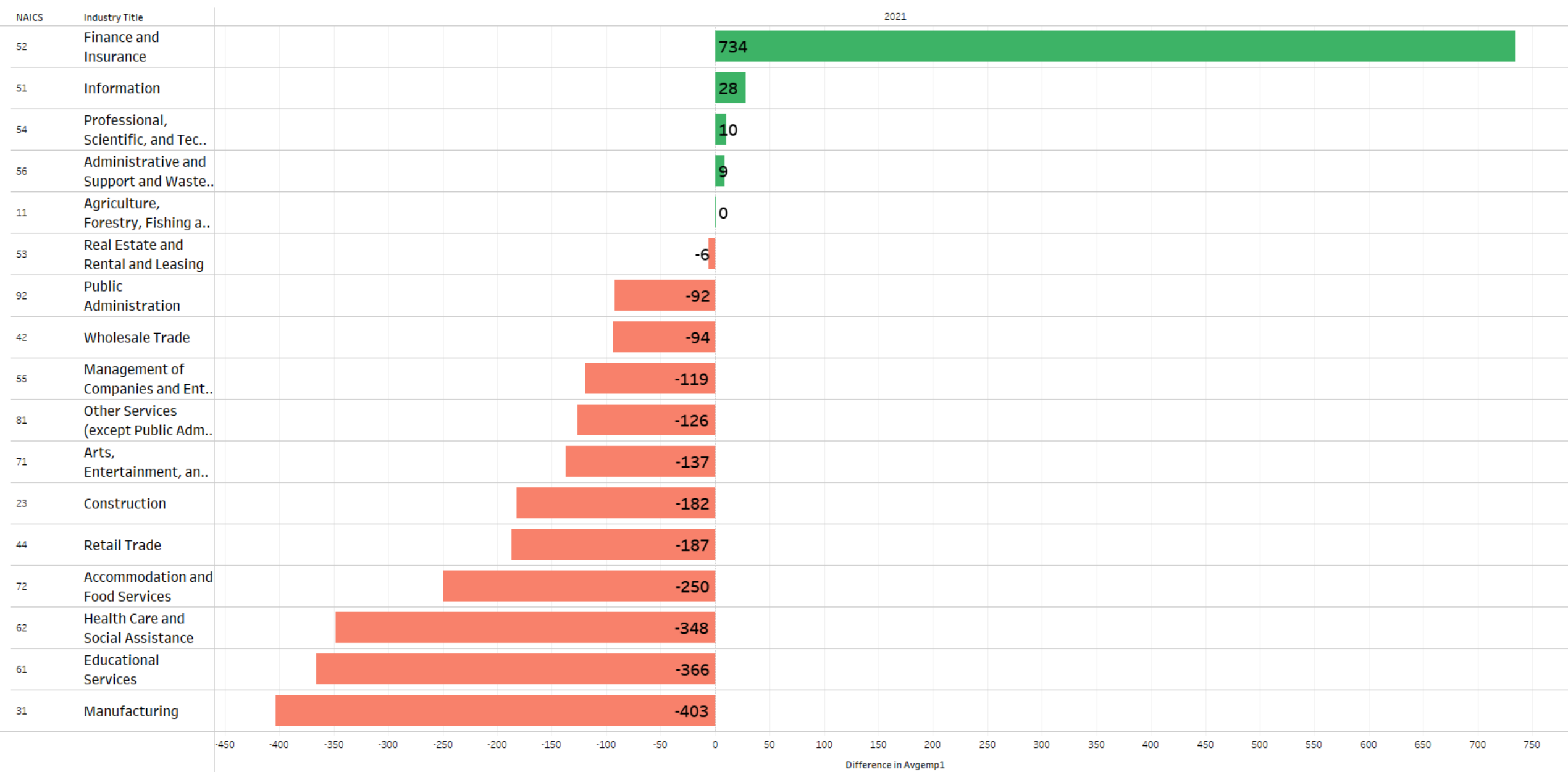
# First Quarter Employment Trends in Wright County



# Wright County Industry Employment in 2020



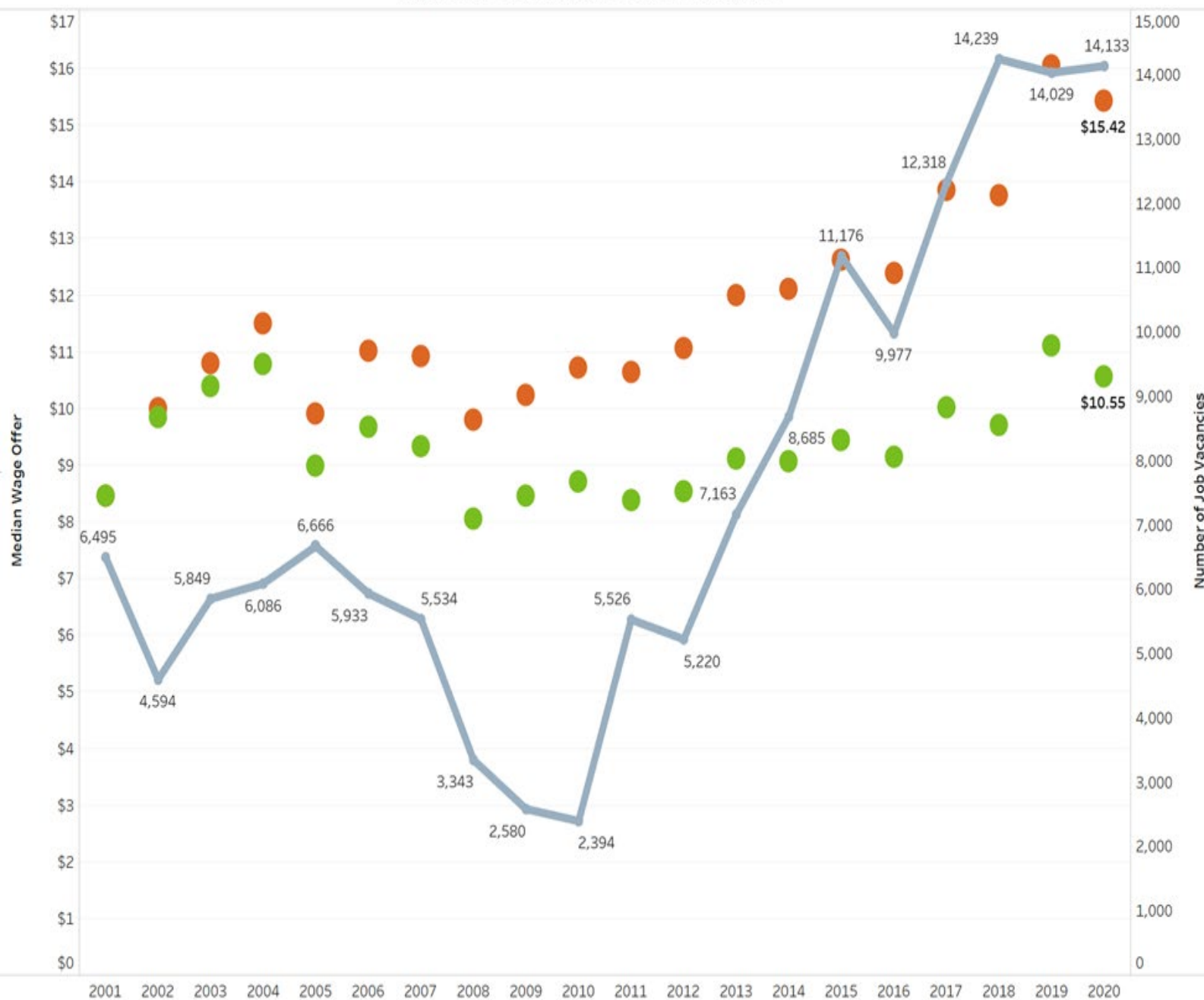
# Wright County Industry OTY Employment Change, 1st Qtr. 2021



Over-the-year Employment Change for 1st Quarter 2021  
Minnesota & Wright County

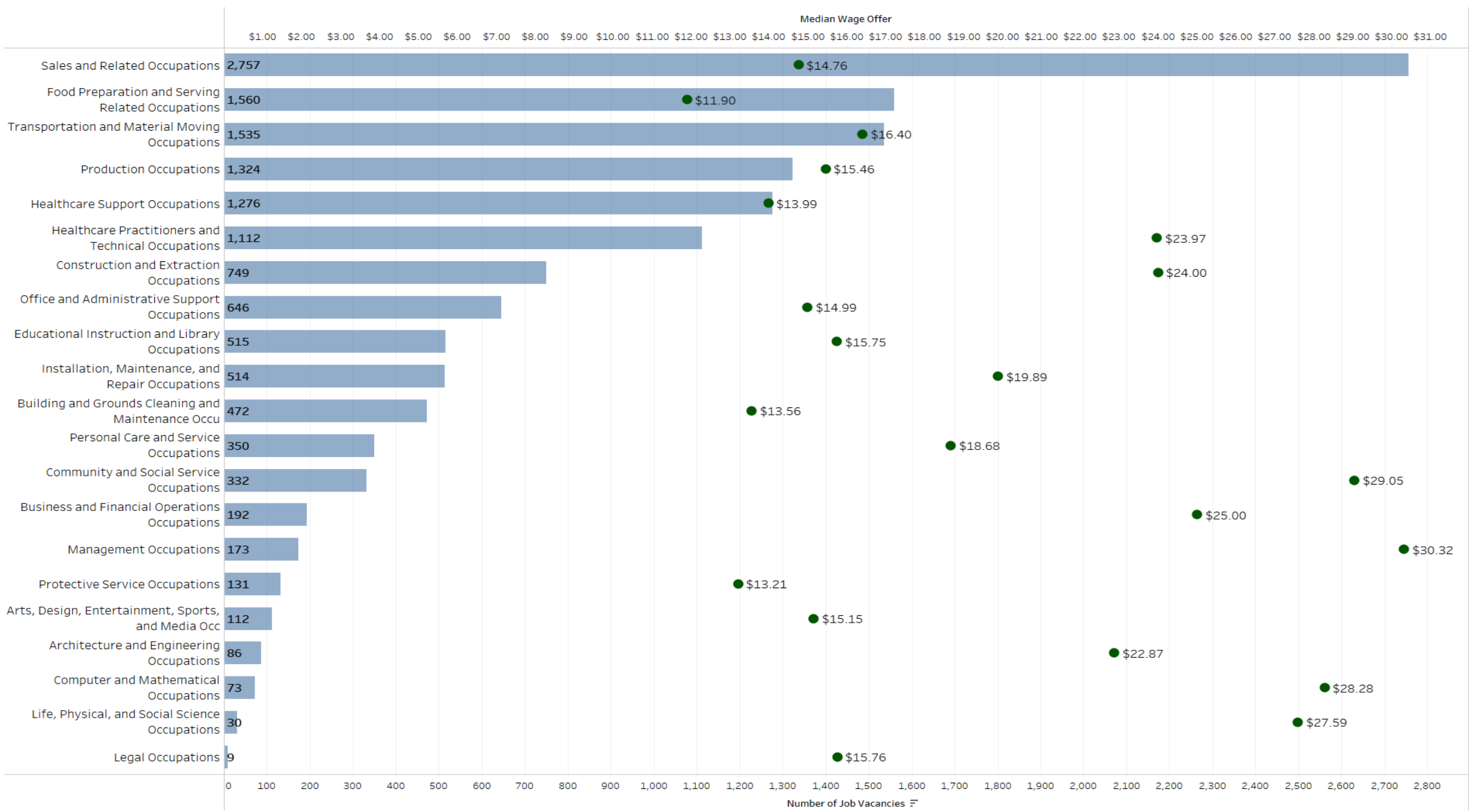
NAICS	Industry Title	AreaName	2021
0000..	Total, All Industries	Minnesota	-6.0%
		Wright County	-3.6%
11	Agriculture, Forestry, Fishing and Hunting	Minnesota	-0.2%
		Wright County	
21	Mining	Minnesota	-3.6%
22	Utilities	Minnesota	-1.6%
23	Construction	Minnesota	-1.1%
		Wright County	-4.8%
31	Manufacturing	Minnesota	-3.9%
		Wright County	-6.4%
42	Wholesale Trade	Minnesota	-3.0%
		Wright County	-5.6%
44	Retail Trade	Minnesota	-2.5%
		Wright County	-2.6%
48	Transportation and Wa..	Minnesota	-5.3%
51	Information	Minnesota	-7.9%
		Wright County	9.9%
52	Finance and Insurance	Minnesota	-0.7%
		Wright County	101.0%
53	Real Estate and Rental and Leasing	Minnesota	-5.0%
		Wright County	-2.7%
54	Professional, Scientific, and Technical Services	Minnesota	-2.1%
		Wright County	1.1%
55	Management of Companies and Enterpri..	Minnesota	-2.5%
		Wright County	-36.6%
56	Administrative and Support and Waste Ma..	Minnesota	-5.5%
		Wright County	0.6%
61	Educational Services	Minnesota	-8.4%
		Wright County	-7.0%
62	Health Care and Social Assistance	Minnesota	-2.6%
		Wright County	-5.8%
71	Arts, Entertainment, and Recreation	Minnesota	-33.6%
		Wright County	-20.9%
72	Accommodation and Food Services	Minnesota	-24.6%
		Wright County	-6.5%
81	Other Services (except Public Administration)	Minnesota	-11.9%
		Wright County	-8.8%
92	Public Administration	Minnesota	-4.2%
		Wright County	-5.7%

Figure 1. Central Minnesota Job Vacancies



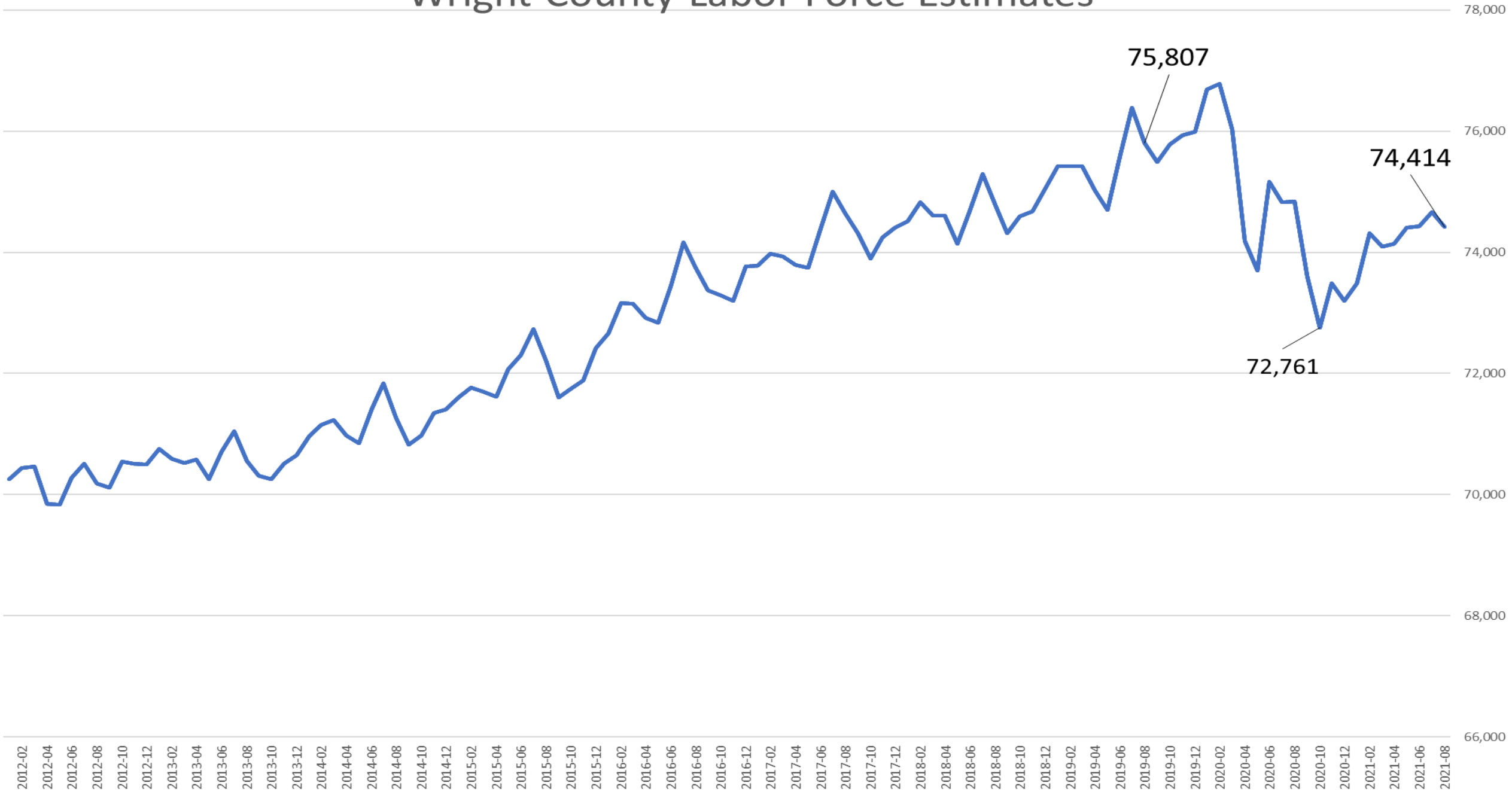
- Record Low Share of Openings are Part-Time**
  - Part-time job openings, which typically soar during economic uncertainty as employers mitigate long-term labor commitments, have fallen to just 36% of all openings, the lowest ever recorded. But for workers needing part-time flexibility, opportunities are still substantial, with nearly 5,100 part time openings compared to 9,051 full-time openings.
- Median Wage Offers Stagnant**
  - Despite widespread hiring challenges employers have yet to substantially increase wages, at least yet. The median wage offer for all openings was \$15.42, for full-time openings it was \$17.14 and \$14.05 for part-time openings.
- Low Education Barrier to Start Working**
  - Just over three-quarters of job openings could be attained with nothing more than a high school diploma. In fact 45% made no mention of any educational requirement at all. For full-time jobs it was slightly lower at 72% and higher for part-time at 78% of openings.
- Sales and Food Prep and Serving Occupations Represent 30% of All Openings**
  - The top two occupational categories continue to have a substantial share of openings in the region. The largest numbers of openings are also in some of the lowest paying occupations, the result of many low skilled workers and high turnover as workers gain skills and move into better paying occupations.
- Share of Openings offering Health Care Increases Slightly**
  - Half of all openings offered health care, up four points from 2019, but roughly consistent since 2012. 80% of full-time openings offer health care while just 22% of part-time openings offer the benefit. Steady gains in the share of part-time openings offering healthcare continued, steadily rising since 2017 when only 12% offered it.

# Central Minnesota Job Vacancies, Fourth Quarter, 2020





# Wright County Labor Force Estimates

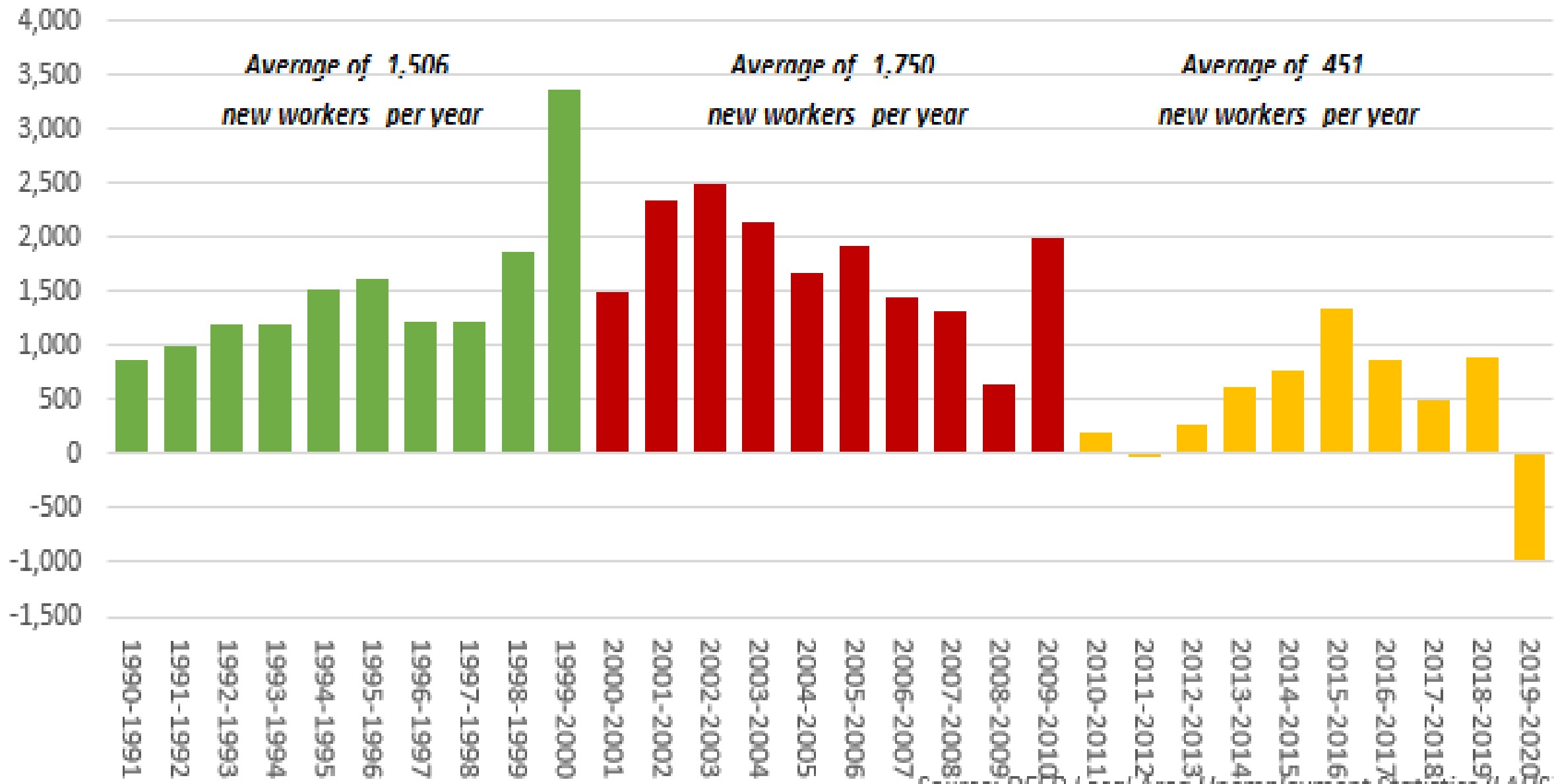


Source: DEED, LAUS

Annual Change in Labor Force, 1990-2020

Wright Co.

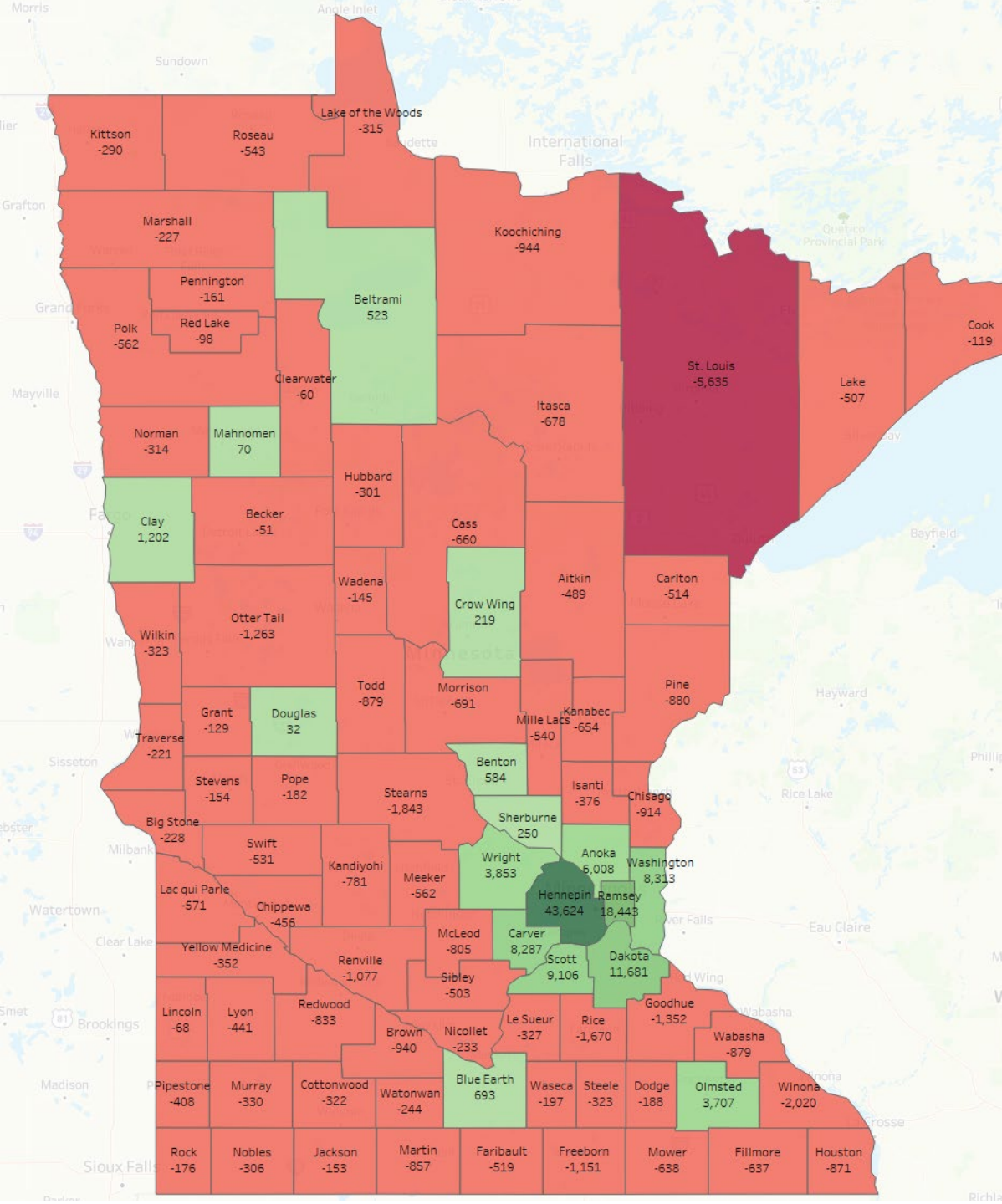
Year-Over-Year Change in Available Workers



Source: DEED Local Area Unemployment Statistics (LAUS)

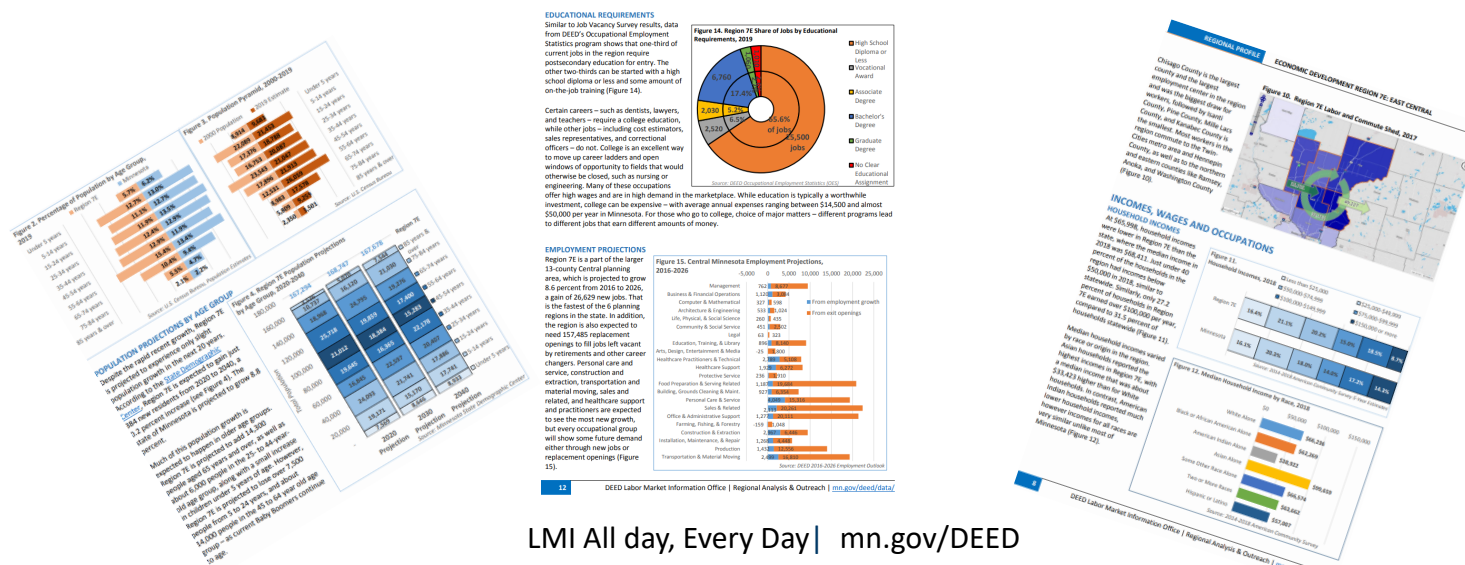
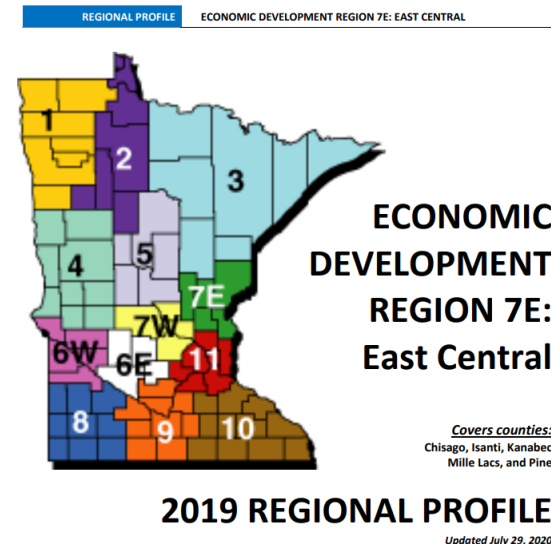
# Labor Force Growth is Even More Important

- Only 17 counties are projected to experience an expanding labor force from 2020-2030
- Minnesota's labor force growth is projected to grow by +2.4% from 2020-2030
- Labor Force participation Rates for workers 55+ have dropped and not recovered since the pandemic started
- LFPR might not recover
- Outcome of Pandemic Recession looks different than the Great Recession



# Regional Profiles for Every Region and County in Minnesota!

- <https://mn.gov/deed/data/regional-lmi/>
- 17 pages of information and glorious data about the region!
  - Ranges from Population trends, projections, labor force, demographics, income, educational attainment, employment, wages, commuting, and much much more!



# Labor market publications and assistance

- **Minnesota Economic Trends:** <http://mn.gov/deed/trends>
  - Quarterly magazine on economic topics
  - Subscriptions available free of charge or on-line
- **Minnesota Employment Review:** <http://mn.gov/deed/review>
  - Monthly magazine on economic data and regional trends
  - Includes Minnesota business development
  - Available exclusively on-line



**Luke Greiner**

Regional Labor Market Analyst

Central Minnesota: <https://mn.gov/deed/data/regional-lmi/central-lmi.jsp>

Southwest Minnesota: <https://mn.gov/deed/data/regional-lmi/southwest-lmi.jsp>

[Luke.greiner@state.mn.us](mailto:Luke.greiner@state.mn.us)

